

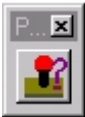
Australian Data Systems Projection View

1. What is ProjectionView?

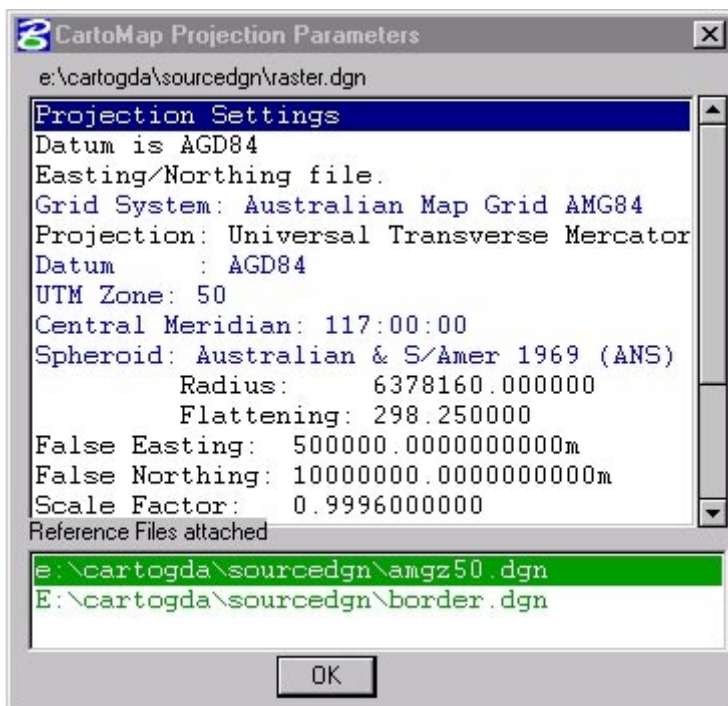
ProjectionView is an MDL application, developed by Australian Data Systems and supplied free of charge, that can be used to decode and view the Type 56 projection stamp element created in design files by CartoMap 5.5 or Stamp56.

2. Displaying the contents of a Type 56 Projection Stamp

Activate the only icon on the ProjectionView toolbar:



This will read and decode the hidden “stamp” and display the contents in a window. If the file contains no stamp, the message “ERROR Type 56 record not found” will display.



Hit the OK button to dismiss the dialog box.

The 'Reference Files attached' section of the dialog box contains information about the Type 56 elements found in attached reference files.

A red line means that a Type 56 stamp was found in the reference file, but it did not match the one in the master design file.

A blue line indicates that no Type 56 stamp was found in the reference file.

A green line means that a Type 56 stamp was found in the reference file and it matched the one in the master design file.

Double-click on a red or green line to display a second dialog box with detailed projection information read from the Type 56 in the relevant reference file.

This new dialog box also has an OK button.

Hit the OK button to dismiss the new dialog box.



Australian Data Systems Pty Ltd
271 Great Eastern Highway, Belmont WA 6104
Ph: 08 9479 1338 Fax: 08 9479 1353
Email: ads@ozdata.com.au Web: www.ozdata.com.au