

Ent Data, Data2 and Data3

If this button is on and the active cell contains Enter Data fields then the data from the data fields is automatically added to the cell.

Text, Text2 and Text3

If any of these buttons are on then after the placement of the cell the text will be hanging on your cursor waiting for placement. The plus and minus buttons allow you to increment or decrement the contents of the text field.

Place Relative Cell

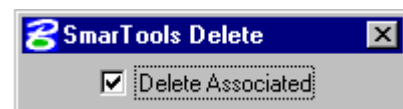
If this button is on then the cell will be placed relative to the active level.

Force Settings

If this button is on then you may override the symbology of the cell to either active setting or to match the line that the cell is placed on.

Delete Cell and heal line

This tool allows for the quick and easy deletion of a cell that is on a line. The cell will be deleted and the line will be rejoined as one continuous line. If the cell cuts multiple lines then all lines will be rejoined.

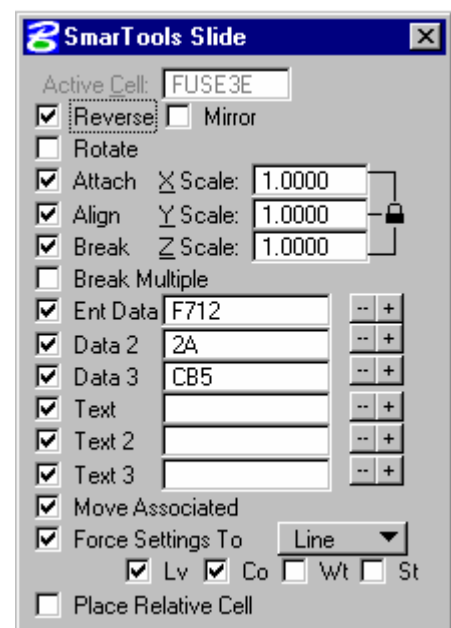


Delete Associated

If this button is on then if there is any text or other cells with the same Graphic group as the cell that is being deleted, then that text or cell will also be deleted.

Slide Cell

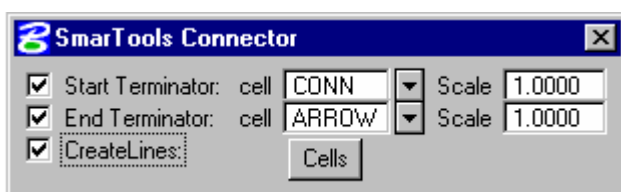
This tool allows for the quick and easy movement of a cell on a line. Movement of the cell will heal the cut line and allow the cell to slide along a line maintaining alignment user attributes, database links, tags and enter data fields. Upon placement, the line will be re-cut and the cell and two resulting lines will be added to a graphic group. If the cell cuts multiple lines then all lines will be rejoined and the line nearest to point that used to locate the cell will become the lines that is used for movement.



Move Associated

If this button is on then if there is any text or other cells with the same Graphic group as the cell that is being moved, then that text or cell will also be repositioned.

Place Connector

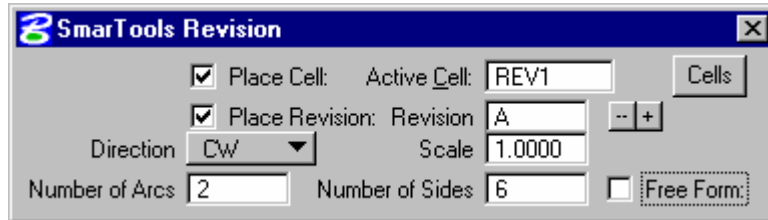


This tool is used for the placement of a connector line with options for a start and/or ending terminator cell aligned to the line. An option allows the line to be placed as a line string element or as a series of line elements.

CreateLines

If this option is on the resulting connector line will be placed as a series of line elements otherwise the connector line will be placed as a linestring.

Place Revision



This tool is used for the placement of a Revision Cloud along with a revision cell and a revision number.

Place Cell

If this option is on then the Active Cell will be placed after drawing of the revision cloud.

Cell

This is the cell that will be placed as the revision triangle. After the revision cloud is drawn, this cell will be attached to your cursor awaiting placement.

Cells

This button will open a cell dialog, allowing for easy selection of the cell.

Place Revision

If this option is on then the revision text will be placed. If a revision cell is being placed and that cell contains an Enter Data field then the enter data field will be used for the revision text. If the cell does not have an enter data field then the active settings are used for the text and the text is placed at the origin point of the cell. If no revision cell is placed then the revision text will be attached to your cursor awaiting placement.

Revision

This is the text that will be placed as the revision number.

+ - These buttons can be used to increment or decrement the revision text.

Direction

This option is used to decide the direction of the arcs for the revision cloud. The available options are Clockwise or Counter Clockwise.

Scale

This is the scale that will be used for the placement of the revision triangle cell and the revision text.

Number of Arcs

This is the number of arcs to be drawn for each segment of the revision cloud.

Number of Sides

This is the number of sides that will be used to draw the revision cloud. If the number of sides is three then the revision cloud will be a triangle shape, four for a square shape etc.

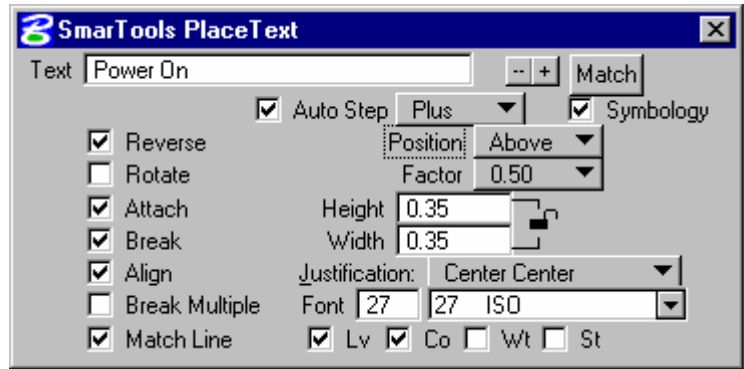
Free Form

If this option is on then the number of sides is ignored and the shape of the revision cloud is freeform.

Place Text and Cut Line

This tool allows for the quick and easy placement of text on a line. The text will align to the line and upon placement will cut the line. If the text overlaps multiple lines then all overlapping lines will be cut to fit the text.

Options to control the placement of text are the same as for the Place Cell command.



Auto Step

If this option is on then as you Place Text, SmarTools will do an auto increment/ decrement to the text value.

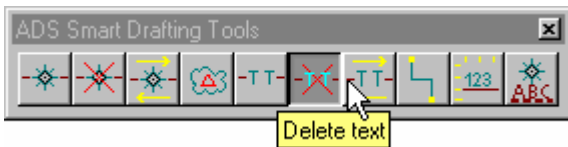
Position

This option will allow you to select the position to place the text, along, above or below the line element. If above or below then you select the offset as a factor of text height.

Text

This is the text that will be placed onto a selected line. The **match** button will allow you to match graphically to any existing text and if the symbology toggle is on then all symbology from the matched text will become the active settings.

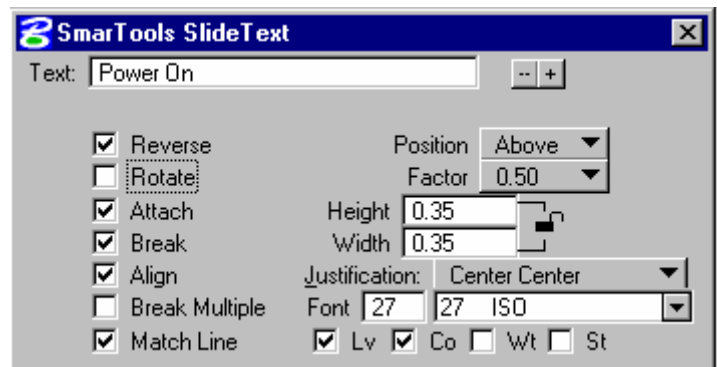
Delete Text and heal line



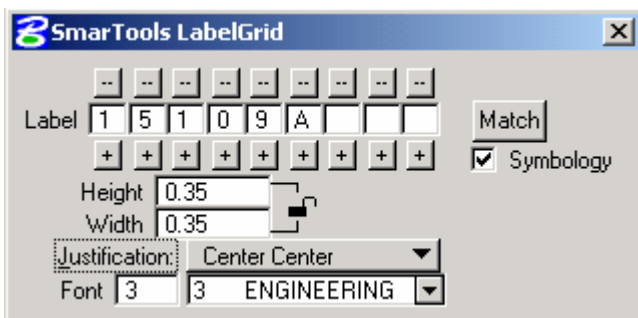
This tool allows for the quick and easy deletion of a text that is on a line. The text will be deleted and the line will be rejoined as one continuous line. If the text cuts multiple lines then all lines will be rejoined.

Slide Text

This tool allows for the quick and easy movement of text on a line. Movement of the text will heal the cut line and allow the text to slide along a line maintaining alignment. Upon placement, the line will be re-cut. If the text cuts multiple lines then all lines will be rejoined. Actions after the heal are the same as the place text command.



Label Lines to Grid

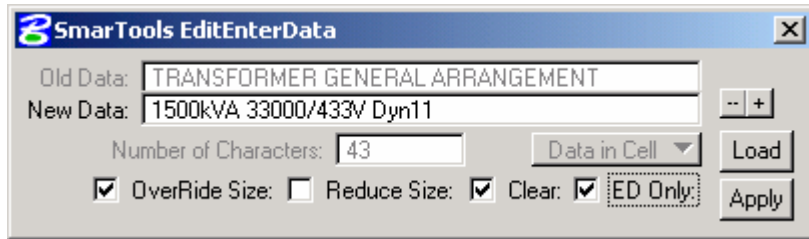


This tool is used for the labelling of lines with the grid reference of the lines.

The **Match** button will allow you to match graphically to any existing text and if the Symbology toggle is on then all symbology from the matched text will become the active settings.

The + and - buttons allow for the easy incrementing or decrementing of any column within the text.

Edit EnterData Fields within a Cell



This tool is used to edit EnterData fields or text within a Cell.

This tool will allow you to identify an EnterData field within a Cell. The current data from the EnterData field will display in the Old Data field on the dialog box and in the New Data field. You may edit the Text in the New Data field.

If the **ED Only** option is on then you may only edit EnterData fields, if this is not on then you may edit normal text.

The **Number of Characters** is the number of text positions within the selected Enter Data element.

The + and – buttons allow for the easy incrementing or decrementing of the New text.

If the **OverRide Size** option is on, then the number of text positions within the enter data element will be increased to hold the size of the New Data. If this option is off then the New Data will be truncated to the actual number of characters within the element.

If the **Reduce Size** option is on, then the number of text positions within the enter data element will be reduced to the size of the New Data.

If the **Clear** option is on, then the New Data field can be blank.

The **Load** button allows you to select the text from an existing text element to be the New Data.

The **Apply** button will replace the old data within the EnterData element or the old text with the New Data.

[View the movie](#)

[Download evaluation software](#)

[Request more information](#)



Australian Data Systems

Ph: +61 8 9250 8044 Fax: +61 8 9250 8344

ads@ozdata.com.au www.ozdata.com.au